



## 2023 FRIDAY GARDEN TOURS - BOOKING FORM

Discover one of the hidden gems of Sydney's North Shore. Eryldene is the former home of Professor E.G. Waterhouse and his family.

The house was built and the garden created early last century and there you will find one of Australia's most important collections of camellias. Professor Waterhouse was internationally recognized for his huge contribution to the "camellia world" and lived in the house until his death in 1977.

Take a tour with one of our garden volunteers to hear about how the Eryldene garden was created and the assembly of one of Australians most important camellia collections. Learn about how we're adapting our garden to cope with the changing climate through implementing our Sustainability Plan. Enjoy a cup of tea or coffee and a homemade treat on the loggia afterwards and chat further with our volunteers.

### AVAILABLE DATES 2023

Our garden tours are available on the second Friday of each month in 2023: **10<sup>th</sup> March, 14<sup>th</sup> April, 12<sup>th</sup> May, 9<sup>th</sup> June, 11<sup>th</sup> August, 8<sup>th</sup> September, 13<sup>th</sup> October and 10<sup>th</sup> November.** We generally offer tours at either 10:30am or 11:30am. On these days, Eryldene's gardens are also open to the public from 10:00am -12:00noon. If you'd like to arrange a tour on another date, please email our office via [eryldene@eryldene.org.au](mailto:eryldene@eryldene.org.au) to make an enquiry.

### COST

The cost per person for our Garden Tour is \$25.00AUD and includes a cup of tea/coffee and homemade slice. Morning Tea also provides an opportunity for visitors to chat further with our team of dedicated volunteer gardeners.

### ACCESSIBILITY

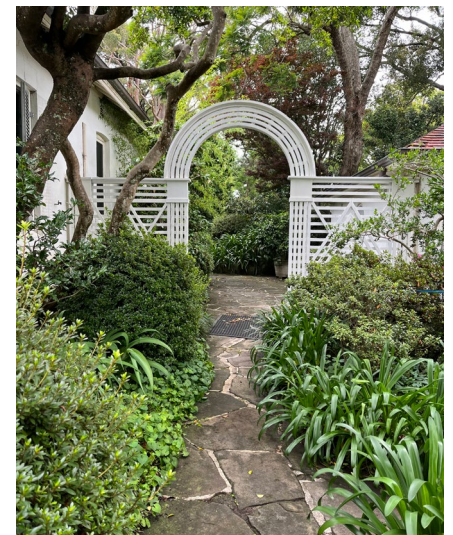
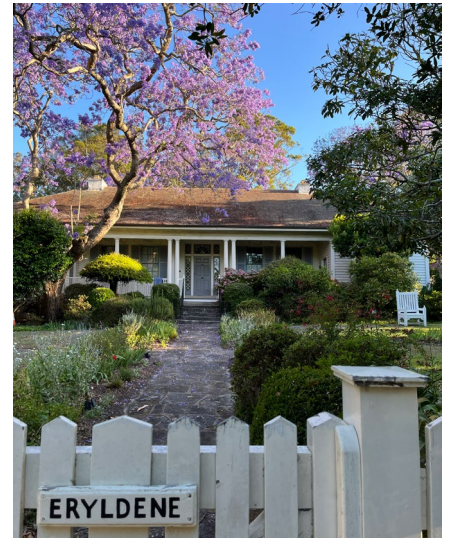
Eryldene's garden is largely as it was when Professor Waterhouse and his family lived here, with winding garden paths of historic flagstones and bricks, which are uneven. Most parts of the garden can be visited without steps, via the original sandstone paved paths and across our lawns. However, our historic paths are uneven, narrow and winding in places, so visitors do need to take care.

For ease of navigating the gardens and coordinating morning tea, we divide larger tour groups into smaller groups of 10-15 people. There are more details about how to access Eryldene on our website.

### NEXT STEPS

To enable us to prepare a quotation for your group, please complete this booking form in full (save as PDF or print, complete and scan it) and email it as an attachment to [eryldene@eryldene.org.au](mailto:eryldene@eryldene.org.au)

If you would like to book a tour, a 50% deposit is required. The deposit is fully refundable if you need to cancel more than 7 days from the date of the tour.



# 2023 FRIDAY GARDEN TOURS - BOOKING FORM



## CONTACT INFORMATION

<b>Name</b>			
<b>Email</b>			
<b>Phone</b>		<b>Date</b>	
<b>Address</b>			
<b>Business</b>			

## GENERAL INFORMATION

<b>Preferred Tour Date</b>		<b>Alternate Date(s)</b>	
<b>Would you prefer a 10:30 or 11:30am tour time for your group?</b>			
<b>Total number of potential attendees</b>			
<b>Catering Requirements</b> Will your group require morning tea? If so, please provide us with any information regarding specific dietary requirements, allergies etc below and our volunteer bakers will do their best!			
<b>Do you have any questions?</b>			
<b>Is there any other information relevant to your booking that you'd like to provide?</b>			
<b>How did you hear about Eryldene?</b> Friends, social media, event planner etc.			

To enable us to prepare a quotation for your group, please complete this booking form in full (save as PDF or print, complete and scan it) and email it to us as an attachment at [eryldene@eryldene.org.au](mailto:eryldene@eryldene.org.au)